



Southbank International School - Westminster

Health and Safety Policy

UK

Health and Safety Policy

THE POLICY

Issue Date: 2 September 2019

Status: Version 3.1.3

Southbank International School - Westminster

PART ONE - STATEMENT OF INTENT

INTRODUCTION

The school believes that ensuring the health and safety of staff, students and visitors and positively promoting health and safety is essential to the success of the school.

We are committed to:

- Providing a safe and healthy working and learning environment on and off site
- Preventing accidents and work related ill health
- Providing safe premises (including access and egress), plant and equipment
- Maintaining safe systems of work among staff (including teaching and non-teaching staff, peripatetic workers and students undertaking work experience) and students
- Assessing and controlling risks from curriculum and non-curriculum work activities
- Providing a safe means of use, handling, storage and transportation of articles and substances
- Formulating effective procedures for use in case of fire and/or the need for emergency evacuation of the school
- Providing adequate information, instruction, training and supervision to staff and students
- Consulting with staff, students and their representatives on health and safety matters
- Setting targets and objectives regarding health and safety performance to develop a culture of continuous improvement
- The regular monitoring and review of health and safety procedures and systems (to include risk assessments, accident records and health and safety related issues and complaints etc)
- Ensuring adequate welfare facilities exist throughout the school
- Ensuring adequate resources are made available for health and safety issues, so far as is reasonably practicable.

The school will establish a Health and Safety Management System to ensure the above commitments can be met. Cognita Schools Ltd, the Head, staff and students will play their part in its implementation.

NAME: Stuart Rolland
Chief Executive Europe

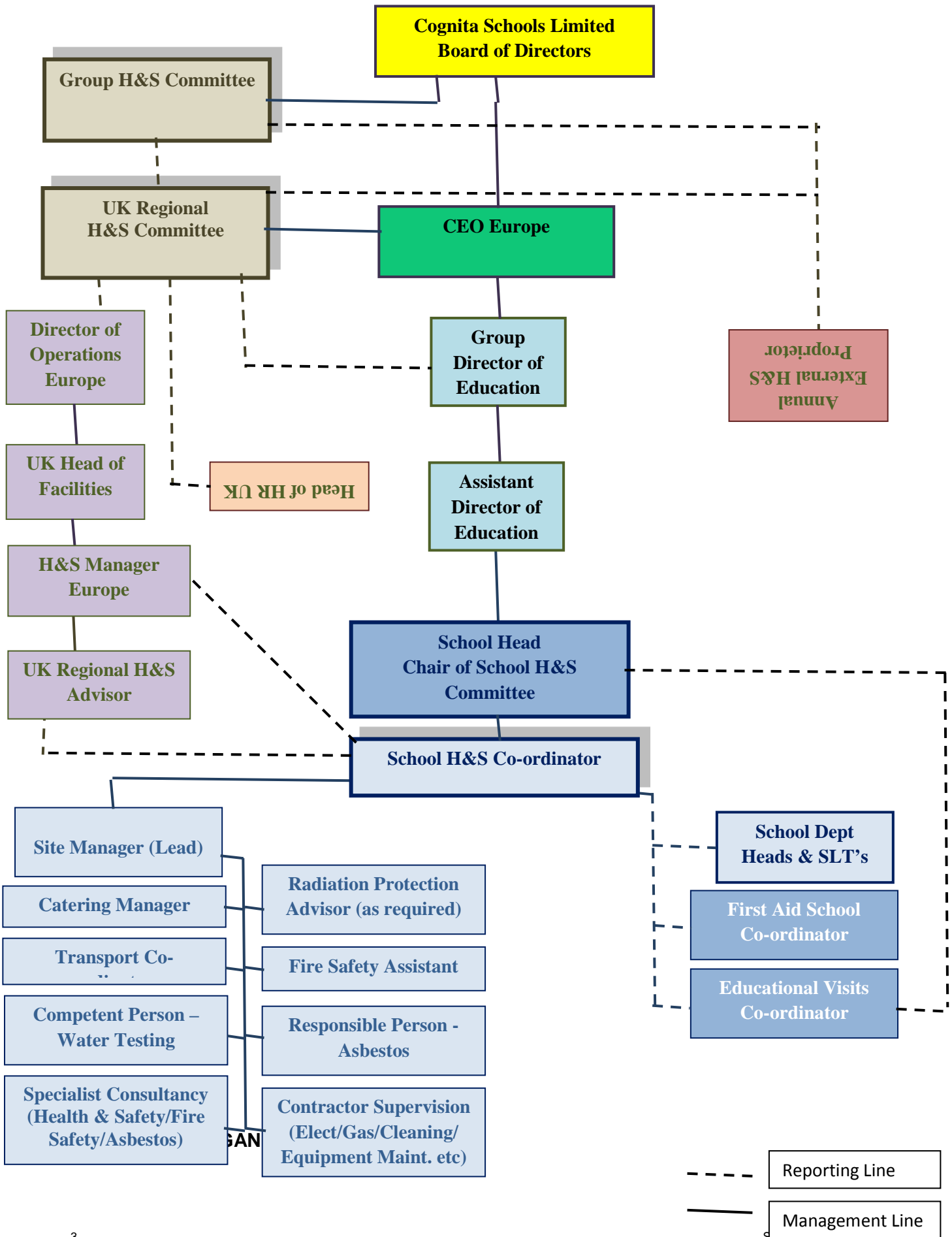


NAME: Paul Wood, Principal

DATE: 2 September 2019



Cognita Schools [UK] Health & Safety Management



Health and Safety Policy

INTRODUCTION

The Board of Directors of Cognita Schools Ltd are responsible for ensuring the implementation of this Health and Safety Policy.

The Directors delegate responsibility for health and safety management to the Assistant Director of Education and to their Head.

In order to ensure compliance with the law and the school's Statement of Intent the Head will arrange appropriate delegation of health and safety management issues as detailed in this part of the Policy.

THE PRINCIPAL WILL ENSURE:

- The promotion of a health and safety culture within the school and on off-site visits in order to prevent accidents, work-related ill health and damage to property.
- That a clear written health and safety policy is developed, implemented and communicated in accordance with legal obligations, relevant HSE and DfE and other appropriate guidance and guidance from Cognita.
- The effective management of health, safety and welfare of staff, students, contractors, visitors and others so far as is reasonably practicable. This policy applies to all students, including those in the Early Years.
- Adequate control of health and safety risks arising out of the school's activities.
- The provision and maintenance of safe premises, plant and equipment.
- Responsibilities for health, safety and welfare are allocated to specific people and those persons are formally informed of these responsibilities.
- Persons to whom health and safety responsibilities are delegated are competent to do their tasks i.e. that they have sufficient experience, knowledge and training to perform the tasks required of them and have sufficient time and resources to undertake the role.
- The provision of adequate information, instruction, supervision and training for staff and students and others such as contractors, where appropriate.
- The establishment of a school H&S Committee which is representative of the operation and structure of the school and which meets at least Termly.
- That arrangements are in place for the effective consultation with staff, nominated trade union representatives and students regarding health and safety matters.
- Clear procedures are created for risk assessment, the development of safe working practices and reporting of accidents, incidents, dangerous occurrences and near misses.
- The formulation of effective procedures for use in case of fire and/or the need for emergency evacuation of the school.
- Sufficient funds are set aside for health and safety management in accordance with the Statement of Intent.
- The school complies with its reporting and record keeping obligations.

Health and Safety Policy

- Accidents, incidents, absence and complaints pertaining to matters of health and safety are properly investigated, if required, and that the school co-operates with the relevant enforcement agencies such as the HSE, local authority and fire authority, if required.
- Health and safety performance is measured both actively and reactively and measures are put in place to monitor the effectiveness of the health and safety arrangements in controlling identified risks.
- The school's health and safety policy is reviewed annually and in light of any significant change throughout the school academic year. Performance is monitored regularly and reports on the health and safety performance of the school is prepared for the Chair of the School Governance Panel.

SCHOOL H&S CO-ORDINATOR WILL ENSURE:

- The promotion of a positive health and safety culture within the School.
- The implementation of a clear, written School Health and Safety Policy that has been developed from the approved Cognita (UK) model policy and is communicated and regularly updated in accordance with legal obligations (alongside other appropriate guidance and updates from the Cognita Group).
- Maintained liaison with other specialist health, safety and fire safety roles appointed within the School, to co-ordinate compliance actions and provide a central point of contact [please note Cognita UK H&S Line Management structure].
- The dissemination of information relevant to health and safety compliance ensuring all compliance duty holders and other key parties within the School are included.
- The co-ordination of the School's H&S Meetings, ensuring these are conducted in accordance with the Terms of Reference for school H&S committee.
- Central co-ordination and access as a key point of contact for any accident, incident or near miss occurrence. Ensuring thorough investigation, review, recording of information and escalation has been conducted and final actions closed out
- Liaison with all School Departments to ensure risk assessments are produced for tasks/activities within such areas, with information provided to relevant parties and regular review undertaken.
- Support as the key contact in order to co-operate with any enforcement agency such as the HSE, HPA, local authority and fire authority, as required.
- Systems are established to allow staff (both teaching and non-teaching) to receive adequate information, supervision and training (both induction training and ongoing training) in health and safety matters relevant to their specialist area by liaising with the School identified Training Co-ordinator.
- Prompt evaluation and, where appropriate, take action on health, safety and welfare concerns and issues which are reported to them, or refer them to the Principal.
- Routine monitoring is established at the School including both internal and external audits and inspections, to ensure ongoing H&S compliance is reviewed and any actions raised are

Health and Safety Policy

appropriately dealt with.

- Termly updates are provided to the School Safeguarding Governance committee detailing the School's progress with identified compliance issues and areas of focus.

MIDDLE MANAGEMENT AND SENIOR LEADERSHIP TEAMS WILL ENSURE:

- Application of the school's Health and Safety Policy to their own department or area of specialism.
- Development and dissemination of a departmental/team health and safety policy, if appropriate, detailing the particular roles and responsibilities for health and safety in that specialist area and the organisational arrangements in place for achieving this.
- Familiarisation with current Regulations, Codes of Practice and Guidance appropriate to their specialist areas and with this Policy (this may require reading trade journals, ESIS, British Standards, CLEAPSS).
- Risk assessments of the activities for which they are responsible are carried out and reviewed as required.
- All staff under their control (to include supply teachers and work experience students) receive adequate information, supervision and training (both induction training and ongoing training) in health and safety matters relevant to their specialist area.
- All statutory notices and appropriate safety signs are displayed in their specialist area.
- Adequacy of first aid provisions, protective clothing and equipment, registers and log books are available for use in their specialist area.
- Machinery, equipment and substances are accompanied by adequate information on use and that use is restricted to named individuals where necessary for reasons of health and safety.
- Prompt evaluation and where appropriate take action on health, safety and welfare concerns and issues which are reported to them, or refer them to the Principal.
- Regular inspections are conducted of their areas of responsibility to ensure that equipment, furniture and activities are safe and record these inspections where required.
- So far as is reasonably practicable, that the provision of sufficient information, instruction, training and supervision to enable other staff and students to avoid hazards and contribute positively to their own health and safety.
- Investigation of any accidents, which occur within their sphere of responsibility.
- Monitoring of the health and safety of his/her department or area of responsibility (including records of risk assessments, health and safety related issues and complaints, and records of accidents) regularly) and prepare an annual report for the Principal on the health and safety performance of his/her department or area of responsibility.
- Inclusion with the health and safety at departmental/team meetings.

Health and Safety Policy

CLASS TEACHERS WILL ENSURE:

- Co-operation with the Principal, their Head of Faculty/Department and their Line Manager on health and safety matters.
- Taking reasonable care for their own health and safety and for that of staff, students, volunteer helpers and visitors under their supervision.
- Familiarity with this Policy and the procedures in respect of fire, first aid and other emergencies, and to carry them out as required.
- Exercising effective supervision of students and give clear oral and written instructions and warnings to students as often as necessary.
- Following any safe working procedures issued for their subject area and generally.
- Provision and request for the use of appropriate protective equipment, clothing and guards where necessary and ensure they are used as required.
- Making recommendations to their Principal or Head of Faculty/Department on health and safety equipment and on additions or necessary improvements to plant, tools, equipment or machinery.
- Integration of all relevant aspects of safety into the teaching process and, where necessary, provide special lessons on health and safety in line with Curriculum requirements for safety education.
- Avoidance of introducing personal items of equipment (electrical or mechanical) into the school without prior authorisation.
- Reporting all accidents, defects and dangerous occurrences to their Principal or Head of Faculty/Department.

NON-TEACHING STAFF WILL ENSURE:

- Co-operation with the Principal, their Head of Faculty/Department and their Line Manager on health and safety matters.
- Acting with due care for the health, safety and welfare of themselves, other staff and other persons at the School.
- Exercising effective supervision over those for whom they are responsible.
- Familiarity with the contents of this Policy and, in particular, the procedures in respect of fire, first aid and other emergencies.
- Observation of all instructions on health and safety issued by Cognita, the school or any other person delegated to be responsible for a relevant aspect of health and safety at the school.
- Implementation of safe working practices which comply with the approved Cognita and school policies and procedures and set a good example personally.
- Acting in accordance with any specific health and safety training received.

Health and Safety Policy

- Exercising good standards of housekeeping and cleanliness.
- Defects are reported to Line Management and offices, general accommodation and vehicles are kept tidy and in good order at all times.
- Tools and equipment are in good condition (and not use them otherwise), ensure that they are appropriate to that use and that adequate instructions for their use are provided.
- Reporting of any defects in tools and equipment and actual or potential hazards to their Line Manager or the Principal and ensure that defective equipment is immediately taken out of use until it has been made safe.
- Use of protective clothing and safety equipment provided (when appropriate) and ensure these are kept in good condition.
- Provision of instructions, warning notices and signs as appropriate.
- Reporting of all accidents in accordance with current procedure.
- Any accidents or incidents, dangerous occurrences or near misses are reported to the Principal.
- Assistance in the investigation of any accident (or incident where personal injury could have arisen) and take appropriate corrective action.
- Where authorising work to be undertaken or authorising the purchase of equipment, the health and safety implications of such work or purchase are considered.
- If entrusted with responsibilities for specific aspects of health, safety and welfare they satisfy themselves that those responsibilities as appropriate are re-assigned in their absence. Such re-assignments must be approved by the employee's Line Manager.
- Minimisation of the occasions when an individual is required to work or study in isolation.
- No interference with or misuse anything provided to safeguard their health and safety.
- Members of staff are expected to be vigilant at all times but particularly where there are vehicles on site and when activity is taking place at height.

STUDENTS (IN ACCORDANCE WITH THEIR AGE AND APTITUDE) WILL ENSURE:

- Co-operation with the Principal and staff on health and safety matters and in particular must follow the instructions of staff in the event of an emergency.
- Taking reasonable care for their own health and safety and that of others at the school.
- Observation of the school rules, standards of dress consistent with safety and/or hygiene.
- Use and not wilfully misuse, neglect or interfere with anything provided to safeguard their health and safety.
- Reporting of all health and safety concerns to the Principal.

HIRERS:

Health and Safety Policy

All hirers of the school must, in addition to the responsibilities of visitors below, ensure arrangements are made for checking the security and condition of the premises and equipment used after vacation by the hirer or his/her staff

VISITORS AND CONTRACTORS:

All visitors and other users of the school premises (to include contractors, delivery people and visitors to the school) must:

- Co-operate with the with school on health and safety matters and in particular follow the instructions of staff in the event of an emergency.
- Observe the rules of the school.
- Ensure that they comply with the school's signing-in/out visitors' and/or contractors' procedures and the appropriate means of access to and egress from the school site and the host arrangements whilst on site.
- Ensure that they are familiar with the school's fire and emergency evacuation procedures.
- Ensure that they have adequate information about the premises, plant and equipment (if appropriate and including the location of asbestos containing materials where intrusive works are to be conducted).

Health and Safety Policy

HEALTH AND SAFETY POLICY

PART THREE – ARRANGEMENTS (PLANNING AND IMPLEMENTATION)

The following procedures and arrangements have been adopted to ensure compliance with the Statement of Intent.

The school should detail the organisational arrangements on the attached tables and should attach relevant documentation.

EMERGENCY & FIRST AID RELATED POLICIES AND PROCEDURES

School Policy and/or Guidance	Responsible Person / Department	Current Issue Date/Ref	Planned Review Date
Critical Incident Management Plan	<i>Principal</i>	<i>September 2019</i>	<i>September 2020</i>
Fire Risk Management Policy	<i>Facilities Manager</i>	<i>September 2019</i>	<i>September 2020</i>
Concussion Policy	<i>Principal</i>	<i>September 2019</i>	<i>September 2020</i>
Fire Risk Strategy	<i>Facilities Manager</i>	<i>September 2019</i>	<i>September 2020</i>
First Aid Policy	<i>Principal</i>	<i>September 2019</i>	<i>September 2020</i>
Prevention and Control of Infection and Communicable Diseases Procedures	<i>Principal</i>	<i>September 2019</i>	<i>September 2020</i>
Serious Incident Reporting Procedure	<i>Facilities Manager</i>	<i>September 2019</i>	<i>September 2020</i>
Supporting Pupils with Medical Conditions Policy	<i>Principal</i>	<i>September 2019</i>	<i>September 2020</i>

FACILITIES RELATED POLICIES AND PROCEDURES

Health and Safety Policy

STANDARD REQUIRED FACILITIES RELATED POLICIES			
Cognita Approved Policy and/or Guidance	Responsible Person / Department	Current Issue Date/Ref	Planned Review Date
Adverse Weather Policy	<i>Principal</i>	<i>September 2019</i>	<i>September 2020</i>
Asbestos Management Plan	<i>Facilities Manager</i>	<i>September 2019</i>	<i>September 2020</i>
Caretaking and Site Staff Policy	<i>Facilities Manager</i>	<i>September 2019</i>	<i>September 2020</i>
Catering Policy	<i>Principall</i>	<i>September 2019</i>	<i>September 2020</i>
Control of Contractors Policy	<i>Facilities Manager</i>	<i>September 2019</i>	<i>September 2020</i>
COSHH (Control of Substances Hazardous to Health) Policy	<i>Facilities Manager</i>	<i>September 2019</i>	<i>September 2020</i>
Display Screen Equipment Policy	<i>Facilities Manager</i>	<i>September 2019</i>	<i>September 2020</i>
Electrical Safety Policy	<i>Facilities Manager</i>	<i>September 2019</i>	<i>September 2020</i>
Legionella Policy	<i>Facilities Manager</i>	<i>September 2019</i>	<i>September 2020</i>
Lone Working Policy	<i>Principal, Facilities Manager</i>	<i>September 2019</i>	<i>September 2020</i>
Machinery, Plant and Equipment Policy	<i>Facilities Manager</i>	<i>September 2019</i>	<i>September 2020</i>
Manual Handling and Lifting Policy	<i>Facilities Manager</i>	<i>September 2019</i>	<i>September 2020</i>
Risk Assessment Policy	<i>Facilities Manager</i>	<i>September 2019</i>	<i>September 2020</i>
Premises Management Policy	<i>Facilities Manager</i>	<i>September 2019</i>	<i>September 2020</i>
Security Action Plan	<i>Facilities Manager</i>	<i>September 2019</i>	<i>September 2020</i>
Security, Workplace Safety and Protection from Violence	<i>Facilities Manager</i>	<i>September 2019</i>	<i>September 2020</i>
Sun Protection Policy	<i>Principal</i>	<i>September 2019</i>	<i>September 2020</i>
Terms of Reference for H&S Committee	<i>Facilities Manager</i>	<i>September 2019</i>	<i>September 2020</i>
Transportation of Students and Staff Policy	<i>Principal</i>	<i>September 2019</i>	<i>September 2020</i>
Welfare Provisions (Facilities) Policy	<i>Principal</i>	<i>September 2019</i>	<i>September 2020</i>
Working at Height Policy	<i>Facilities Manager</i>	<i>September 2019</i>	<i>September 2020</i>
ADDITIONAL FACILITIES POLICIES – SPECIFIC TO THE SCHOOL			
School Policy and/or Guidance	Responsible Person / Department	Current Issue Date/Ref	Planned Review Date

Health and Safety Policy

RISK ASSESSMENTS

STANDARD REQUIRED RISK ASSESSMENTS			
Cognita Approved Policy and/or Guidance	Responsible Person / Department	Current Issue Date/Ref	Planned Review Date
Administration and Faculty Office Areas	<i>Facilities Manager</i>	<i>September 2019</i>	<i>September 2020</i>
Art Class Rooms	<i>HoF/D</i>	<i>September 2019</i>	<i>September 2020</i>
Cleaning Activities	<i>Facilities Manager</i>	<i>September 2019</i>	<i>September 2020</i>
Boiler Rooms	<i>Facilities Manager</i>	<i>September 2019</i>	<i>September 2020</i>
Design and Food Technology Rooms	<i>HoF/D</i>	<i>September 2019</i>	<i>September 2020</i>
Early Years Foundation Stage	<i>NA</i>		
Eating Facilities	<i>Facilities Manager</i>	<i>September 2019</i>	<i>September 2020</i>
Electrically Powered Gates	<i>NA</i>		
Events	<i>Facilities Manager, Event Organiser</i>	<i>September 2019</i>	<i>September 2020</i>
External Grounds and Play Areas	<i>Facilities Manager</i>	<i>September 2019</i>	<i>September 2020</i>
First Aid Risk Assessment	<i>Facilities Manager, First Aid Coordinator</i>	<i>September 2019</i>	<i>September 2020</i>
Fire Risk Assessment	<i>Facilities Manager</i>	<i>September 2019</i>	<i>September 2020</i>
General Caretaking Activities	<i>Facilities Manager</i>	<i>September 2019</i>	<i>September 2020</i>
General Class Rooms	<i>Facilities Manager</i>	<i>September 2019</i>	<i>September 2020</i>
IT Class Rooms	<i>HoF/D</i>	<i>September 2019</i>	<i>September 2020</i>
IT Technicians and Server Rooms	<i>HoF/D</i>	<i>September 2019</i>	<i>September 2020</i>
Learning Support and SEN Class Rooms	<i>HoF/D</i>	<i>September 2019</i>	<i>September 2020</i>
Library	<i>Facilities Manager</i>	<i>September 2019</i>	<i>September 2020</i>
Lone Working	<i>Facilities Manager, Principal</i>	<i>September 2019</i>	<i>September 2020</i>
Main Reception Area	<i>Facilities Manager</i>	<i>September 2019</i>	<i>September 2020</i>
Music Rooms	<i>HoF/D</i>	<i>September 2019</i>	<i>September 2020</i>
Reprographics Areas	<i>Facilities Manager</i>	<i>September 2019</i>	<i>September 2020</i>
School Assembly Areas	<i>Facilities Manager</i>	<i>September 2019</i>	<i>September 2020</i>
Science Laboratories	<i>HoF/D</i>	<i>September 2019</i>	<i>September 2020</i>

Health and Safety Policy

Security Risk Assessment	<i>Facilities Manager</i>	<i>September 2019</i>	<i>September 2020</i>
Sports Halls	NA		
Staff Rooms	<i>Facilities Manager</i>	<i>September 2019</i>	<i>September 2020</i>
Stairs and Communal Areas	<i>Facilities Manager</i>	<i>September 2019</i>	<i>September 2020</i>
Storage Rooms	<i>Facilities Manager</i>	<i>September 2019</i>	<i>September 2020</i>
Swimming Pools	NA		
Toilets and Welfare Areas	<i>Facilities Manager</i>	<i>September 2019</i>	<i>September 2020</i>
Traffic Management	<i>Facilities Manager</i>	<i>September 2019</i>	<i>September 2020</i>
Use of Passenger Lifts	<i>Facilities Manager</i>	<i>September 2019</i>	<i>September 2020</i>

ADDITIONAL RISK ASSESSMENTS – SPECIFIC TO THE SCHOOL			
School Policy and/or Guidance	Responsible Person / Department	Current Issue Date/Ref	Planned Review Date

Authorised by [School Head]: Paul Wood, Principal

Date 2 September 2019

Effective date of the policy 2 September 2019

Health and Safety Policy

Circulation

[School Assistant Director of Education /Chair of the School Safeguarding Committee/teaching staff/all non-teaching staff]

Status

Complies with requirements of the Health and Safety at Work etc Act 1974

NOTE: This Health and Safety Policy document is subject to review and revision by Cognita, therefore please ensure that you are using the current correct version by checking with your school Head or their nominated Health and Safety Coordinator.

Health and Safety Policy

Ownership and consultation	
Document sponsor (role)	Director of Operations
Document author (name)	Greg Warwick and Melissa Jones
Specialist Legal Advice	n/a
Consultation	n/a

Compliance	
Compliance with	Health and Safety at Work etc Act 1974

Audience	
Audience	Heads

Document application	
England	Yes
Wales	Yes
Spain	No

Version control	
Implementation date	August 2016
Review date	June 2020

Related documentation	
Related documentation	Emergency and First aid related policies and procedures Facilities related policies and procedures