



# SCHOOL PROFILE 2022–2023

## ABOUT SOUTHBANK

'We are committed to challenging our students academically, a liberal ethos and the values of the International Baccalaureate' – Mission statement.

- Founded in 1979
- IB World School - first school in UK to offer all IB Programmes (PYP, MYP, DP)
- Multi campus school in the heart of London

## DIPLOMA REQUIREMENT (G11 AND G12)

2 years English	2 years Maths	2 years Science	Theory of Knowledge
2 years Language Acquisition	2 years Individuals & Societies	2 years Arts	Community, Action, Service
			Extended Essay

## CONTACTS

Siobhan McGrath, Executive Principal  
[siobhan.mcgrath@southbank.org](mailto:siobhan.mcgrath@southbank.org)

Keith Birch, School Principal  
[wes.principal@southbank.org](mailto:wes.principal@southbank.org)

Angela Liu, Deputy Principal  
[angela.liu@southbank.org](mailto:angela.liu@southbank.org)

Salah Hajjaj, Head of Upper Seniors  
[salah.hajjaj@southbank.org](mailto:salah.hajjaj@southbank.org)

Fabienne Fontaine, Diploma Programme Co-ordinator  
[fabienne.fontaine@southbank.org](mailto:fabienne.fontaine@southbank.org)

Jane Arneil, Higher Education and Careers Lead  
[jane.arneil@southbank.org](mailto:jane.arneil@southbank.org)

Ana de Castro, Higher Education and Careers Advisor  
[ana.decastro@southbank.org](mailto:ana.decastro@southbank.org)

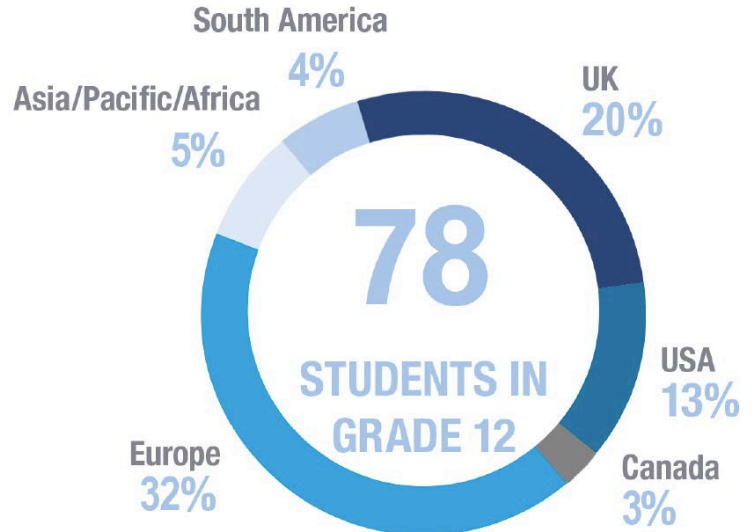
Rosalind Stewart, Higher Education and Careers Advisor  
[rosalind.stewart@southbank.org](mailto:rosalind.stewart@southbank.org)

## COVID RESPONSE

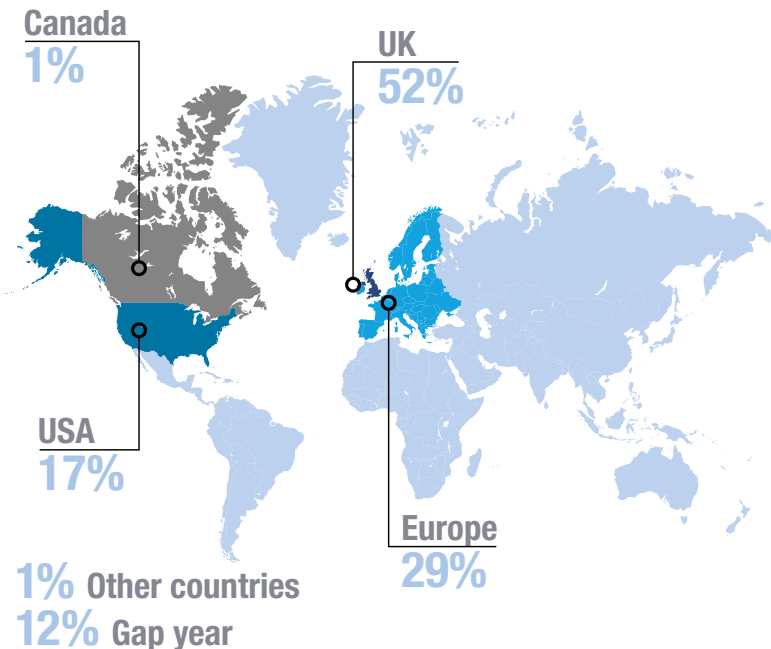
Our students, their well-being and their progression have been at the forefront of our thinking as we respond to the pandemic. We will continue to be vigilant, responsive and adaptable as we navigate the next phases of COVID.

- In 2020 and 2021 there were three national lockdowns in the UK, during which there was remote learning.
- The IB made adaptations to help address the challenges caused by the pandemic, including adjustments to assessment, which were extended to examinations in 2022.
- In 2023, students undertaking the DP and MYP will complete the full suite of assessments which will return to the published model for all subjects and components.

## CLASS OF 2023 NATIONALITIES



## UNIVERSITY DESTINATIONS 2022



## ACCREDITATIONS



## MEMBERSHIPS AND AFFILIATIONS



<b>299</b> Students in Grades 9–12	<b>78</b> Students in Class of 2022	<b>54</b> Nationalities Represented in Grades 9–12	<b>13</b> Average Class Size
---------------------------------------	--	---	---------------------------------

## UNIVERSITY OFFERS – SOUTHBANK GRADUATES 2020–2022

### United Kingdom

Aston University Bath Spa University	Hult International Business School	Newcastle University	UCL (University College London)	University of Leicester
BIMM Institute	Imperial College London	Norwich University of Arts	Ulster University	University of Liverpool
Birkbeck University	Institute of Contemporary Music Performance	Nottingham Trent University	University Centre Sparsholt	University of Manchester
Birmingham City University	Istituto Marangoni London	Oxford Brookes University	University for the Creative Arts	University of Nottingham
Bournemouth University	Keele University	Pearson College London (including Escape Studios)	University of Bath	University of Oxford
Brighton and Sussex Medical School	King's College London	Point Blank Music School	University of Birmingham	University of Plymouth
Bristol, University of	Kingston University	Queen Mary (University of London)	University of Brighton	University of Portsmouth
West of England	Lancaster University	Ravensbourne University London	University of Bristol	University of Reading
Brunel University	Leeds Arts University	Regent's University Royal Holloway	University of Cambridge	University of Salford
Buckinghamshire New University	London College of Contemporary Arts	SOAS University of London	University of East Anglia	University of Sheffield
Cardiff University	London College of Creative Media	St George's (University of London)	University of East London	University of Southampton
City (University of London)	Metropolitan University	St Mary's University	University of Edinburgh	University of St Andrews
Conde Nast College	London South Bank University	Teesside University	University of Essex	University of Strathclyde
Courtald Institute of Art UAL	University Loughborough	University of Law UAL (University of the Arts, London)	University of Exeter	University of Surrey
Coventry University	University Met Film School		University of Glasgow	University of Sussex
Durham University	Middlesex University		University of Greenwich	University of the West of England (Bristol)
Goldsmiths (University of London)	New College of the Humanities		University of Hertfordshire	University of Warwick
Hartpury University			University of Kent	University of Westminster
			University of Leeds	University of York
				Warwickshire College and University Centre
				Writtle University College

### North America

American University	Denver University	Nova South Eastern U	University of Arizona	University of Michigan - Ann Arbor
Arizona State University	Elon University	OCAD - Ontario College of Art & Design	University of California, Berkeley	University of Missouri - Columbia
Babson College	Embry-Riddle	Ohio State University	University of California, Davis	University of Oregon
Bard College	Aeronautical University	Pace University	University of California, Irvine	University of Richmond (Virginia)
Barnard College	Emerson College	Princeton University	University of California, San Diego	University of Rochester
Boston University	Emory University - Oxford	Purdue University	University of California, Santa Barbara	University of San Francisco
Bowdoin College	Fairfield University	Queen's College - CUNY	University of California, Santa Cruz	University of South Florida
Brock University	Fordham University	Reed College	University of California, Santa Cruz	University of Southern California
Bucknell University	George Washington University	Rollins College	University of Chicago	University of Texas at Austin
California College of the Arts	Georgetown University	San Diego State University	University of Colorado - Boulder	University of Washington
Case Western Reserve University	High Point University	Santa Clara University	University of Connecticut	University of Wisconsin - Madison
Clemson University	Hunter College	Sarah Lawrence College	University of Denver	Ursinas College
College of Lewis and Clark	Lake Forest College	Savannah College of Art and Design	University of Florida	USMA West Point
Colorado College	Lehigh University	Skidmore College	University of La Verne	Vassar College
Columbia University – Sciences Po (Dual Degree)	Loyola Marymount University	Southern Methodist University	University of Massachusetts Amherst	Villanova University
Connecticut College	Loyola University Chicago	Stony Brook University	University of Massachusetts Boston	Wesleyan University
CUNY - City University of New York	Lynn University	Suffolk University	University of Miami	Wheaton College
Dalhousie University	Merrimack College	Swarthmore University	University of Miami - Oxford (Ohio)	Massachusetts Whittier College
Dartmouth College	McGill University	Syracuse University		
DePaul University	McMaster University	Trinity College University of Alabama		
	University Michigan State			
	University Middlebury College			
	University New York			
	University Northeastern			

### Rest of the World

American University of Paris, France	ESSEC Business School, France	Maastricht University	Sciences Polytechnique, France	University of Amsterdam of Applied Sciences, The Netherlands
Amsterdam University, Netherlands	Glion University, Switzerland	NLNEOMA Business School, France	Tilburg University, The Netherlands	University of Groningen, The Netherlands
Bocconi University - Milan, Italy	IE University Spain	Royal Academy of Art, The Hague (KABK), Netherlands	Universita Cattolica del Sacro Cuore, Italy	University of Navarra, Spain
CUNEF Universidad, Spain	Istituto Europeo di Design (IED) Barcelona, Spain	Saint Louis University, Spain	Université Paris Dauphine, France	Utrecht University, Netherlands
Dalhousie University	Leiden University, the Netherlands	Science Po - Columbia University (Dual Degree), France	University College Amsterdam, The Netherlands	University of Botswana
EHL (Ecole Hôtelière de Lausanne), Switzerland	Luiss University, Italy			

## COLLEGE BOARD TESTING RESULTS FOR 2022

**% Applicants to US who took SAT** 32%

**Median SAT** 1450

Many test administrations were cancelled during 2020-2021 due to national lockdowns

### HISTORICAL IB DP DATA

	2022	2021	2020
<b>Number of students</b>	71	77	63
<b>Pass rate</b>	99%	100%	100%
<b>Score distribution</b>			
40-45	19	26	12
35-39	27	34	36
30-34	19	15	10
24-29	5	2	5
<b>Average IB Diploma Score</b>	36.00	37.60	36.60
<b>World Average</b>	31.98	33.02	31.00
<b>Bilingual DP</b>	17%	35%	19%

### GRADING SCALE AND RANKING

Grade	IBDP Descriptor	US Grade
7	Excellent	A+
6	Very good	A
5	Good	B
4	Satisfactory	C
3	Adequate	D
2	Weak	E
1	Very weak	F

Southbank does not offer GPA or ranking

### EXTRACURRICULAR OPPORTUNITIES

Southbank offers a dynamic range of extracurricular activities:

- Student Council
- Varsity Teams
- Student Senate
- Rock Music Group
- Choir
- String Orchestra
- Drama Club
- FIRST Tech Challenge (FTC) robotics competition
- MUN Conferences
- Debate Club and Competitions
- Publications Club
- Global Issues Network
- ISSA – Intern'l School Sports Assoc.
- Duke of Edinburgh Award
- Biomedical Society
- Politics and Economics Society
- London Exploration Society